



WAC15

WASTEWATER ACCESS CHAMBER

[Product One Sheet >](#)

WAC 15

WASTEWATER ACCESS CHAMBER



APPLICATIONS

The JM Eagle Wastewater Access Chamber (WAC 15) may be used in place of standard concrete manholes, cleanouts, dead-end manholes, or sampling ports, or used in any location in a sewage or storm drainage collection system that requires access for maintenance and inspection.

DESCRIPTION

WAC 15 features a body that is a sturdy 3/8-inch thick, with one-piece construction.

Its smooth interior improves the flow ($n = .009$) through molded inverts. It is large enough for easy insertion of CCTV equipment and high-pressure cleaning equipment, yet too small for human entry.

The water-tight lid with gasket installs in top of the riser. Due to its 15-inch size, the riser remains independent of the standard ring and cover.



BENEFITS

WAC 15 not only provides a long-lasting, cost-effective alternative to concrete, it is also effective in minimizing the dangers involved in human entry into confined spaces.

- It is lightweight for easy handling at the job site and light in color for better visibility in the interior.
- It is economical compared to conventional manholes, incurring lower installation costs and offering corrosion resistance, resistance to damage in shipping, flexibility under earth loads and watertight performance.
- Its smooth interior reduces cleaning frequency, and maintenance is simplified with no man entry and resistance to damage from mechanical cleaning equipment.

15" WAC PRODUCT SPECIFICATION

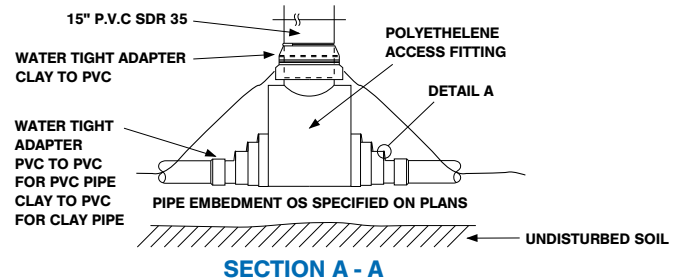
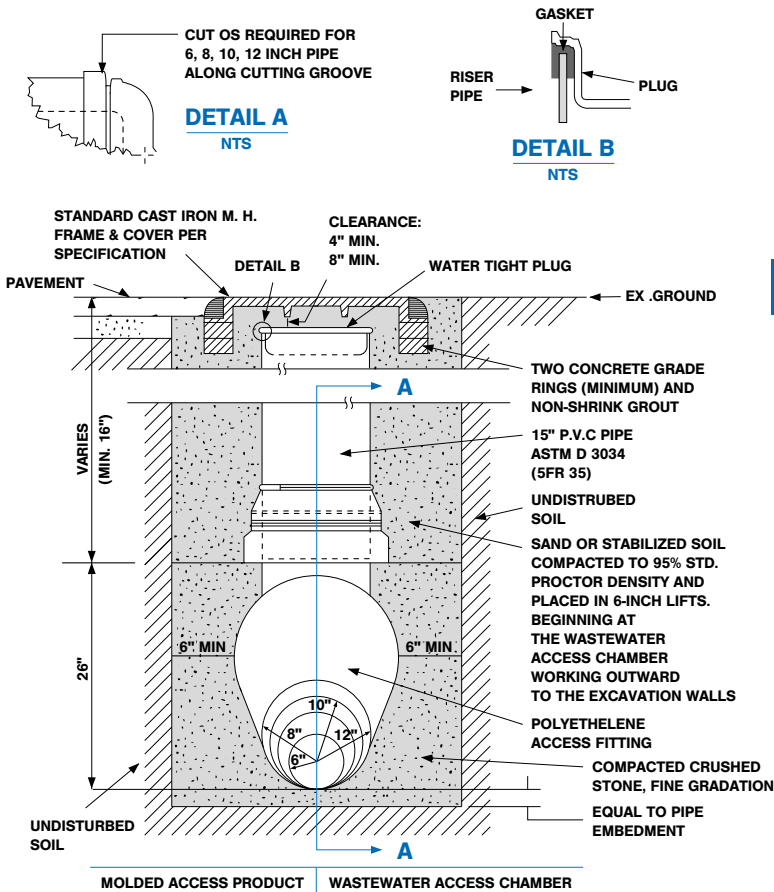
General

The Wastewater Access Chamber (WAC) may be used in place of standard concrete manholes, cleanouts, dead-end manholes, or sampling ports, or used in any location in a sewage or storm drainage collection system that requires access for maintenance and inspection equipment, without man entry. The chamber body is a one-piece, rotational molded polyethylene unit that is corrosion resistant, lightweight and designed for use in both traffic and non-traffic locations where the sewer pipe is 9-, 8-, 10- or 12 inches in diameter. The chamber is adaptable to clay, cast iron, ductile iron, PVC or concrete pipe through use of flexible couplings.

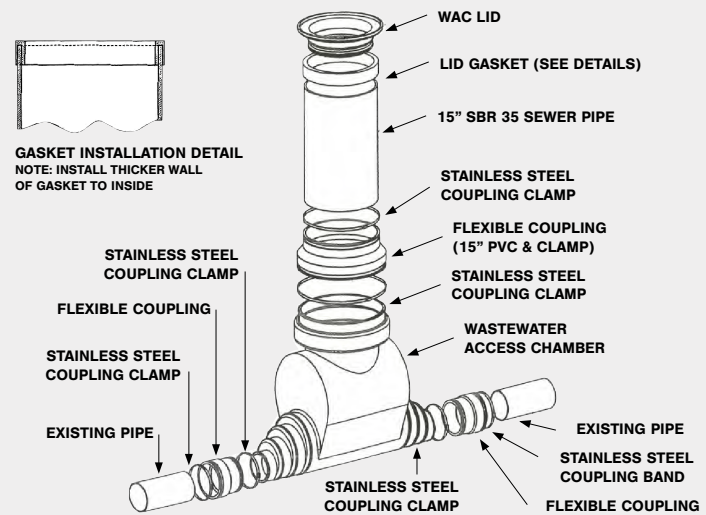
PHYSICAL DIMENSIONS

- Length of body shall be 43.75" +/- 0.50"
- Height shall be 37.75" +/- 0.50"
- Thickness shall be an average of 0.375"
- Width shall be 18.75" +/- 0.50"

WAC INSTALLATION



DIMENSIONS OF BODY



EXPLODED VIEW OF WAC 15